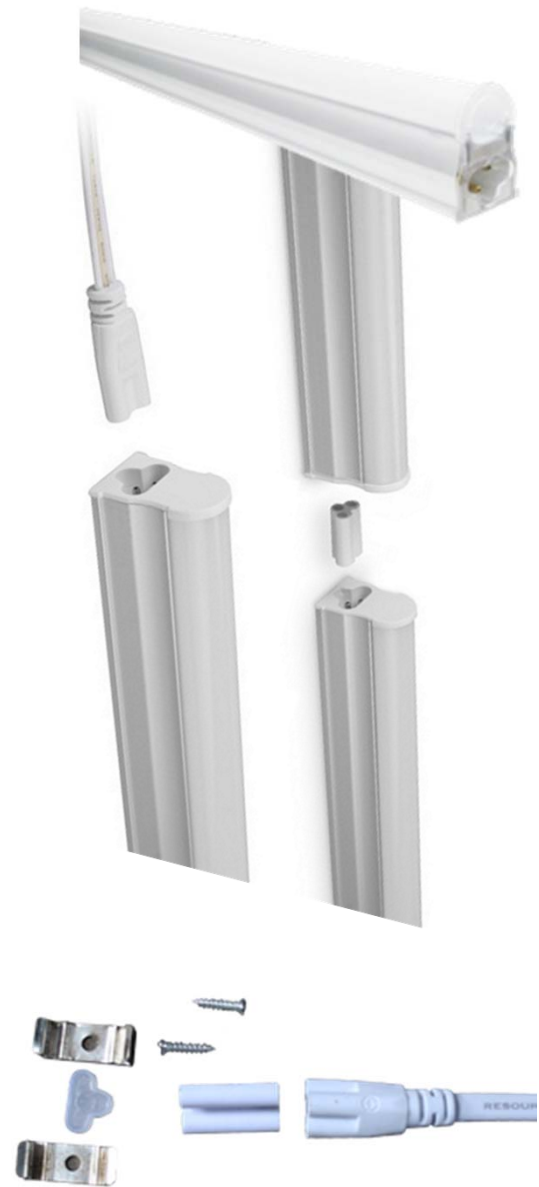




T5 Integrated Tube Lights - Silver Edition

230v T5 Integrated Tube Lights 1ft. to 4ft. (Fluorescent Fixture Replacement) Warm - Cool White

Product Codes	T51is-4w20bw
	T52is-8w40bw
	T53is-12w60bw
	T54is-16w80bw
Power (watts)	T51is-4w20bw = 3.5w
	T52is-8w40bw = 6.7w
	T53is-12w60bw = 10.5w
	T54is-16w80bw = 15.1w
Operating voltage	85-265v
Lamp cap	T5 complete luminaire
Expected Life (hours)	30000
Light output (lumens)	T51is-4w20bw = 275
	T52is-8w40bw = 530
	T53is-12w60bw = 830
	T54is-16w80bw = 1450
Colour temperature	3000-6000k Cool/Warm \
Colour rendering index	>70 CRI
Beam angle (degrees)	140°
Dimming range	Non-dimmable
Replaces	T51is-4w20bw = 10w FL
	T52is-8w40bw = 20w FL
	T53is-12w60bw = 30w FL
	T54is-16w80bw = 45w FL
Dimensions (l x b x h) wt.	314 x 35 x 23mm (78g)
	575 x 35 x 23mm (110g)
	1180 x 22 x 32mm (240g)



These value for money LED Integrated Tube Lights that replace 85-265v Fluorescent Luminaires and which uses up to 3 times less electricity than their retrofit alternatives, come with a 1 year warranty. The T53is-12w60bw option of this Integrated Tube closely replicates the light of a 30w fluorescent whereas the T54is-16w80bw replicates a 45w fluorescent and the T52s-8w16nw replicates a 24w fluorescent. These tubes use >70 CRI SMD 2835 LED chips and a translucent lens to give a very even light spread throughout their 240° beam angle. The refraction of the lens extends the light spill beyond 180° These fixtures are modular and plug into each other back to back maintaining light continuity between the units. They have an internal driver and merely need a 230v connection to be plugged into one end of the joined unit string not exceeding 4 units. They come with attachment clips for easy surface mounting. The life expectancy of these tubes are 30000 hours and are RoHS compliant.